

Puzzle

by Barber & Osgerby



MU
TIN
A

Puzzle

by Barber & Osgerby

Puzzle è piastrelle in gres porcellanato smaltato, che si articolano in un'alternanza tra fondi tinta unita e pattern grafici a più colori.

L'idea di base della collezione risiede nella progettazione dell'intero ambiente e non del singolo rivestimento, permettendo la comunicazione tra gli elementi architettonici e spaziali dei diversi ambienti della casa e creando una linea continua tra le declinazioni dei colori della collezione.

La versatilità delle tinte unite e dei pattern grafici offre infinite possibilità di progettare gli spazi, abbinando pavimenti con rivestimenti, delineando aree con l'utilizzo di cornici o tappeti grafici, per dare un ritmo e un carattere agli ambienti ogni volta unico.

Puzzle is a set of glazed porcelain stoneware tiles: a mixture of block colours and multi-coloured graphic patterns.

The idea behind the collection is to design the entire room and not an individual façade, giving the chance of communication between architectural and space elements placed in different parts of the house and drawing a continuous line through colour declinations of the collection.

The versatility of the block colours and graphic patterns offers endless possibilities to the space projects, combining walls and floors, shaping areas with frames and graphic flooring, aiming to give rhythm and attitude to unique settlements.



Puzzle si ispira a un gioco di infinite combinazioni, lasciando che le forme si uniscano e si mescolino. Semplici figure geometriche si alleggeriscono e fluttuano man mano che il puzzle si compone, formando mappe, isole, nuvole...Le diverse configurazioni e combinazioni permettono a qualsiasi posa di essere sempre unica.

The Puzzle collection is a game with infinite outcomes. The simple geometric shapes become softer and more fluid as the puzzle grows, allowing patterns to ebb and flow. Objects emerge like maps, islands or clouds, with endless possible permutations, meaning that whenever Puzzle is used it will always be unique.

Edward Barber & Jay Osgerby

The Collection

Puzzle é un'originale composizione di geometrie e colori che rende i pattern protagonisti. Qualunque sia la disposizione, il disegno che ne deriva risulta sempre interessante e unico, dando vita a infinite combinazioni ogni volta nuove. È realizzata in 25·25 cm, un unico formato ormai inusuale nel mondo della ceramica, con uno spessore importante, 14 mm, per dare maggior valore al manufatto. Le otto famiglie cromatiche di Puzzle sono composte da:

6 PATTERN GRAFICI

composti da 3 colori

3 FONDI A TINTA UNITA

in 3 colori diversi

2 PATTERN EDGE

speculari composti da 2 colori

Puzzle is an original composition of colour and geometry in which patterns are at the forefront. No matter how you arrange Puzzle, the resulting design will always be interesting and unique, creating infinite combinations that are new every time. The tiles measure 25·25 cm, a single format that is now somewhat unusual in the ceramics world, and are quite thick at 14 mm to give greater value to the piece. There are eight colour families, each one composed of:

A SET OF 6 GRAPHIC PATTERNS

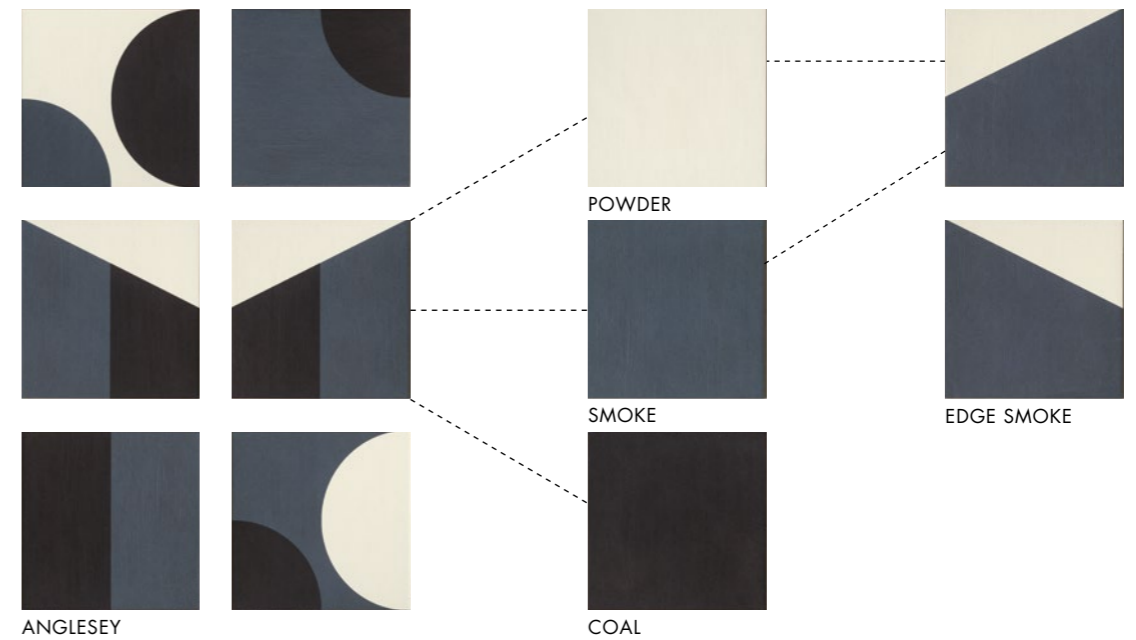
in 3 colours

3 PLAIN TILES

in 3 different colours

A SET OF 2 SYMMETRICAL EDGE PATTERNS

in 2 colours



SET OF PATTERN

6 pattern grafici
6 graphic patterns

FONDI/PLAIN TILES

3 fondi tinta unita
in 3 differenti colori
3 plain tiles
in 3 different colours

EDGE

2 patterns
Edge speculari
2 symmetrical
Edge patterns

Puzzle Colour Families



FAROE



POWDER



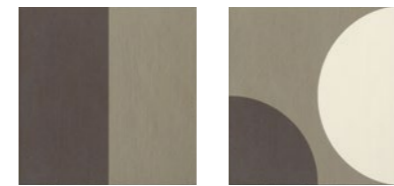
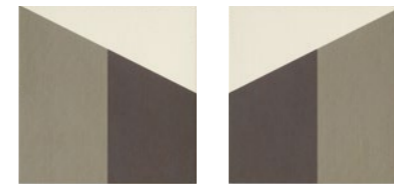
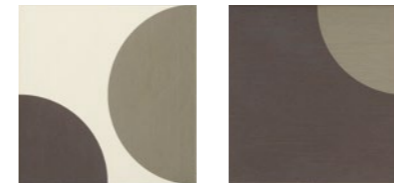
MINERAL



STONE



EDGE MINERAL



GOTLAND



POWDER



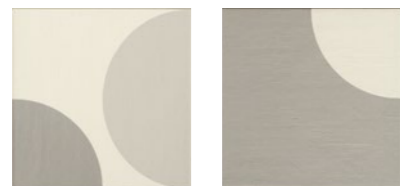
CLAY



STEEL



EDGE STEEL



ALAND



POWDER



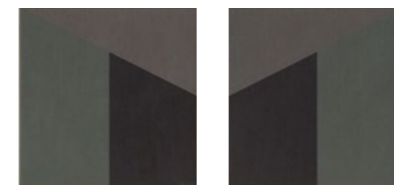
STONE



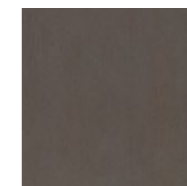
ASH



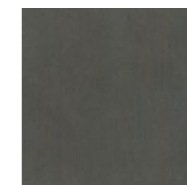
EDGE STONE



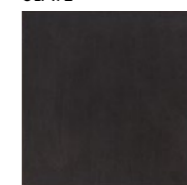
SKYE



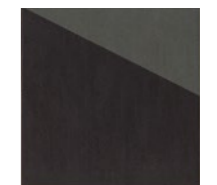
STEEL



SLATE

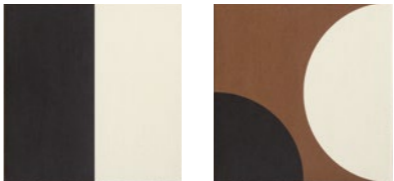
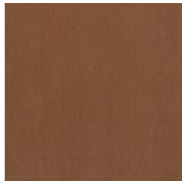
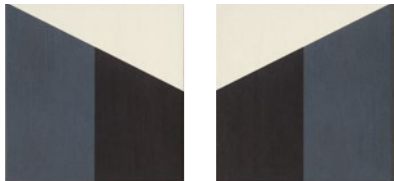
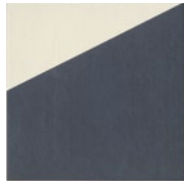
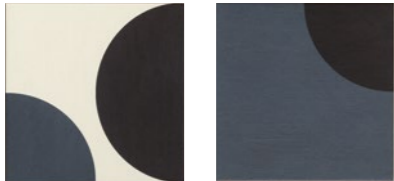


COAL



EDGE SLATE

Puzzle Colour Families



ANGLESEY

POWDER

SMOKE

CRETA

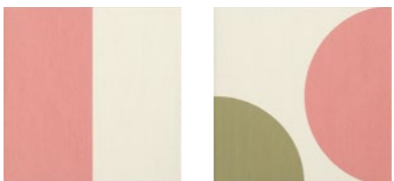
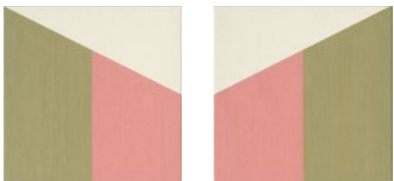
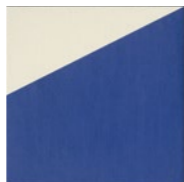
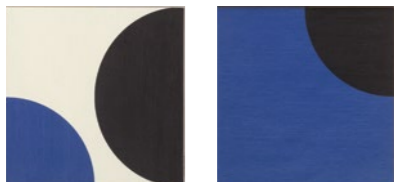
BRICK

EDGE COAL

SMOKE

COAL

COAL



MILOS

POWDER

EDGE CERULEAN

MURANO

OLIVE

EDGE OLIVE

CERULEAN

COAL

FRAGOLA

Suggestions

Puzzle è infinite combinazioni randomiche in una totale libertà di disposizione. I nostri suggerimenti mostrano soltanto alcune delle sue innumerevoli combinazioni: un vero pezzo unico, che muta disponendo i suoi elementi in orizzontale o in verticale, a pavimento o rivestimento, seguendo forme regolari o astratte.

Nasce così la possibilità di progettare un pavimento grafico abbinato a un rivestimento tinta unita e viceversa. Creare una gradazione di colore che a partire dal pavimento a tinta unita sfuma in pattern grafici che si sviluppano anche in verticale e mutano in rivestimento. O ancora un pavimento di incontro tra pattern Edge in disposizione ordinata per creare vere e proprie forme geometriche che gradualmente si disordinano in una disposizione randomica. Tre tipologie di elementi combinate insieme: pavimenti e rivestimenti che vedono sia i set di pattern sia i pattern Edge essere utilizzati per comporre battiscopa, perimetri e altre interlinee tra ambienti o spazi, messi in correlazione grazie ai fondi molteplici declinati nelle nuance coordinate.

Puzzle stands for the infinity of possible combinations and a total freedom in its disposition. Our suggestions only show a small group of its endless combinations: a real unique piece that changes with its elements through horizontal or vertical positioning, through floors or walls, and geometric or abstract shapes.

Giving the chance of design graphic flooring matched with a block colour façade and vice-versa. Creating a gradation of colours that starts out as a block colour on the floor and blends into graphic patterns up to the wall using the skirting board to change into a façade. Or even designing a floor where the Edge patterns are organized into actual geometric forms that gradually disperse randomly. Three types of elements combined together: floors and walls are displayed within set of patterns or Edge patterns, building skirting boards, frames or other lines in between spaces, put in relationship thanks to multiple coordinated block colours.









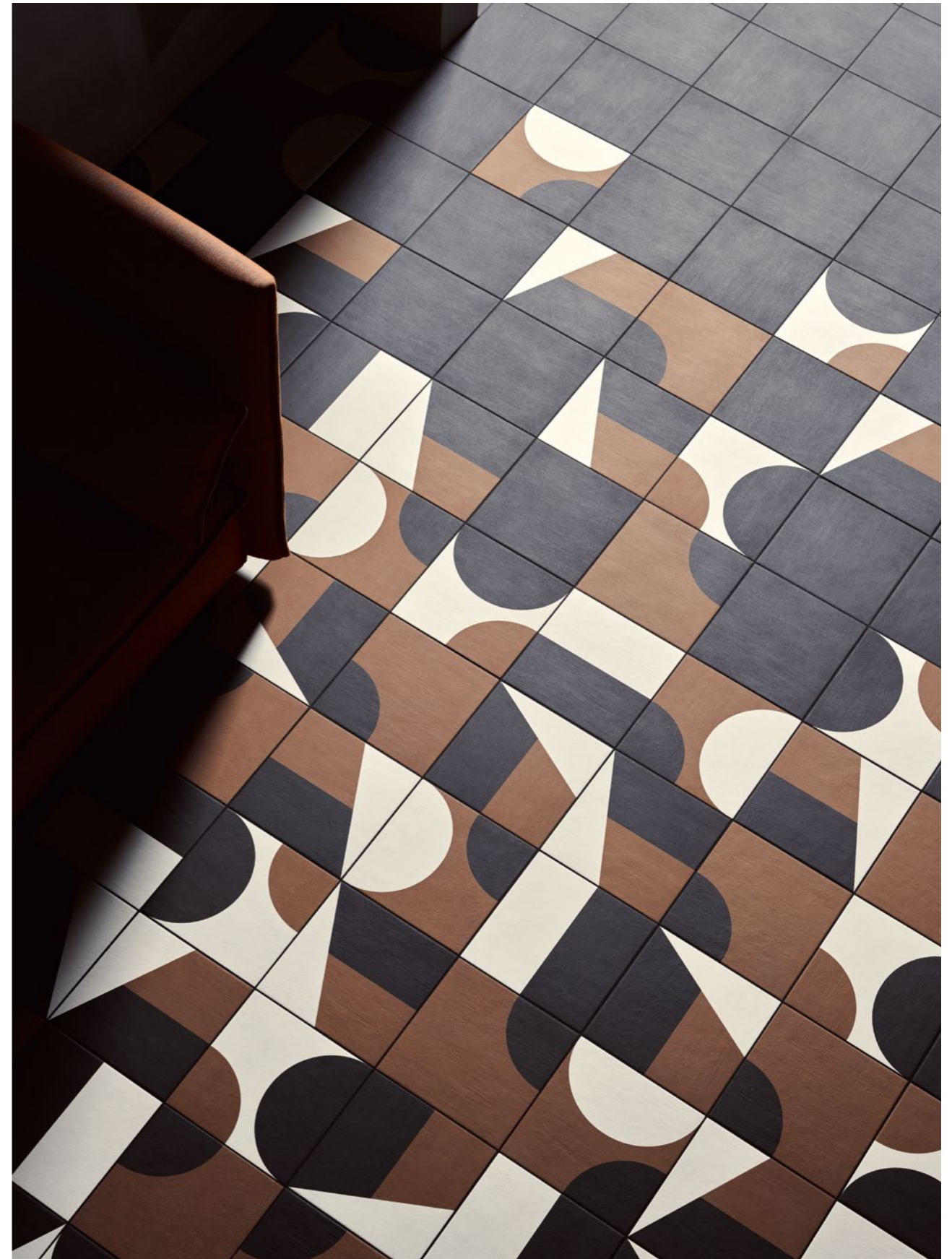






Puzzle Smoke, Anglesey, Powder









Puzzle Edge Slate, Slate



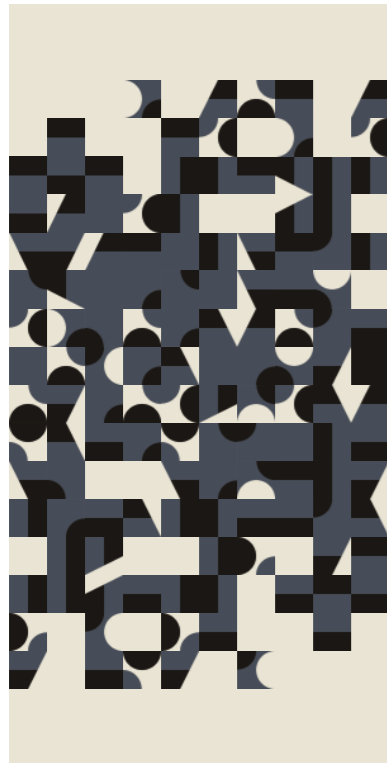




Pattern Layouts

Puzzle dà la possibilità di creare combinazioni che vedono protagonisti gli elementi pattern grafici, pattern edge ed i fondi con diverse possibilità di posa. Qui sotto qualche esempio proposto nel colore Anglesey, ma che può essere declinato in tutte le 8 famiglie di colore.

Puzzle enables to create combinations that feature graphic pattern elements, edge elements and solid backgrounds with multiple options of installation. Find following few examples in Anglesey colour, that can be used for all of the 8 families of colour.



PUZZLE / Schema 1

Posa random sfumata con un fondo tinta unita

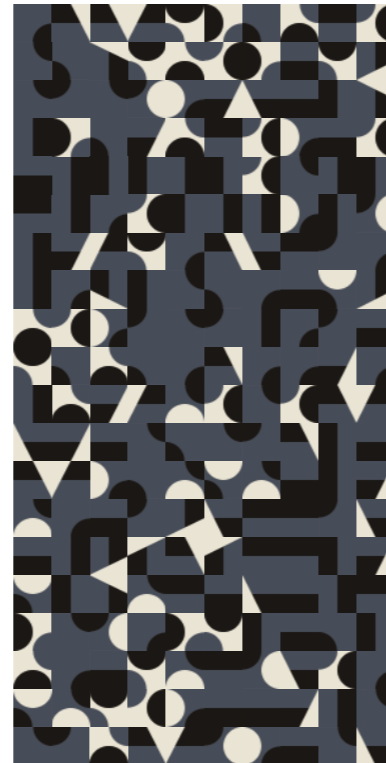
Random shaded installation on one solid background



PUZZLE / Schema 2

Posa random sfumata con due fondi tinta unita

Random shaded installation on two solid backgrounds



PUZZLE / Schema 3

Solo pattern in posa random
Full random pattern installation



PUZZLE / Schema 4

Posa random con un fondo tinta unita come cornice

Random shaded installation framed by one solid background



PUZZLE / Schema 5

Posa random affiancata da un fondo tinta unita

Random shaded installation flanked by one solid background



PUZZLE / Schema 6

Fondo tinta unita con cornice di pattern in posa random

Solid background framed by random pattern installation

Edge Layouts



PUZZLE / Schema 9

Posa sfumata con due fondi tinta unita
Shaded installation on two solid background



PUZZLE / Schema 10

Posa sfumata con un fondo tinta unita
Shaded installation on one solid background



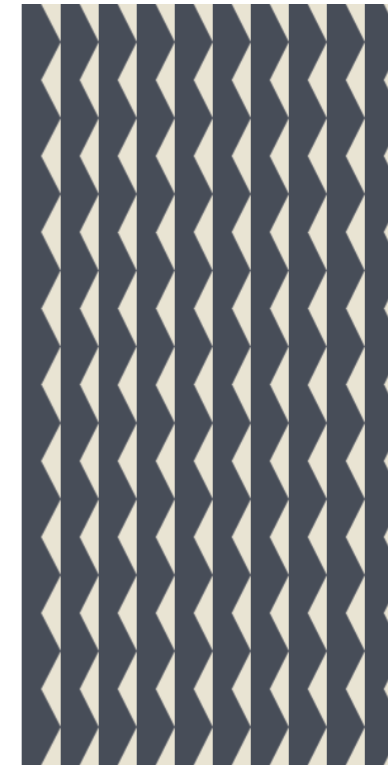
PUZZLE / Schema 12

Posa random
Random installation



PUZZLE / Schema 13

Posa ordinata A
Well-ordered installation A



PUZZLE / Schema 14

Posa ordinata B
Well-ordered installation B



PUZZLE / Schema 15

Posa ordinata C
Well-ordered installation C

Sizes & Colors

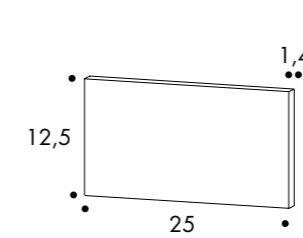
design	Barber & Osgerby	2016
production	industrial	
material	gres porcellanato smaltato glazed porcelain stoneware	
thickness	14 mm	
*	misure nominali/nominal sizes	
size	* 25.25 cm / 10".10"	

Modello depositato n° 003065440 – data di deposito: 12/04/2016
Registered design n° 003065440 – date of registration: 12/04/2016



25.25 cm / 10".10"

battiscopa/skirt



sezione
section



12,5.25 cm / 5".10"

Technical Features

UNI EN14411:2012 App. GL. (Bla Group)

NORMA STANDARD	CARATTERISTICHE FEATURES	VALORE PRESCRITTO VALUE REQUIRED	PUZZLE
ISO 10545/3	assorbimento d'acqua/ water absorption	< 0,5%	0,06%
ASTM C373		< 0,5%	0,06%
EN 101	durezza superficiale (scala mohs) surface hardness (scala mohs)	≥ 5	5
ISO 10545/9	resistenza agli sbalzi termici resistance to thermal shock	nessuna alterazione visibile no visible alteration	resiste resistant
ISO 10545/12	resistenza al gelo frost resistance	nessuna alterazione visibile no visible alteration	resiste resistant
ASTM C1026		unaffected	unaffected
ISO 10545/13	resistenza agli attacchi chimici resistance to chemical attacks	nessuna alterazione visibile no visible alteration	resiste resistant
ASTM C650			unaffected
ISO 10545/4	sfuerzo di rottura (N) breaking strength (N)	Sp ≥ 7,5 min 1300	resiste resistant
	classificazione carico di rottura breaking strenght classification		U4 (carichi pesanti) U4 (heavy weights)
DIN 51130-04		valori medi 6÷10° R9 10÷19° R10 19÷27° R11 27÷35° R12 > 35° R13	R10
DCOF		> 0,42	0,68
LEED CERTIFICATION 4.1			20% recycled material

Packing

FORMATO SIZE	PZ-MQ PCS-SQM	PZ-SCAT. PCS-BOX	MQ-SCAT. SQM-BOX	SCAT.-PAL. BOX-PAL.	KG-SCAT. KG-BOX	KG-PAL. KG-PAL.	MQ-PAL. SQMS-PAL.
25-25 cm	16	12	0,75	60	23,50	1410	45,00
set of 6 patterns 25-25 cm	16	12	0,75	60	23,50	1410	45,00
edge 25-25 cm	16	12	0,75	60	23,50	1410	45,00
battiscopa 12,5-25 cm	-	10	2,5 ml	-	9,80	-	-

Edward Barber & Jay Osgerby



Barber e Osgerby inaugurano il loro studio londinese nel 1996, dopo essersi laureati al Royal College of Art di Londra. Il loro approccio multidisciplinare sfida i confini del design industriale, dell'architettura e dell'arte. I loro lavori includono collezioni per Knoll, Vitra, B & B Italia, Cappellini, Venini e Flos, limited edition e commissioni pubbliche come la London 2012 Olympic Torch e la moneta da 2 sterline disegnata per la Royal Mint. La prima monografia estensiva loro dedicata, pubblicata da Rizzoli New York, è del 2011. Entrambi sono Royal Designers for Industry (RDI) e Honorary Doctors of Art. Il loro lavoro è nelle collezioni permanenti di musei in tutto il mondo, come il V&A e il Design Museum di Londra, il Metropolitan Museum of Art di New York o l'Art Institute di Chicago.

Barber and Osgerby opened their London studio in 1996, having graduated from the Royal College of Art in London. Their multidisciplinary approach pushed the boundaries of industrial design, architecture and art. Their work includes collections for Knoll, Vitra, B & B Italia, Cappellini, Venini and Flos, limited edition pieces and commissions such as the London 2012 Olympic Torch and the £2 coin designed for the Royal Mint. The first extensive monograph on the pair was published by Rizzoli New York in 2011. They are both Royal Designers for Industry (RDI) and Honorary Doctors of Art. Their work is included in the permanent collections of museums around the world, such as the V&A and Design Museum in London, the Metropolitan Museum of Art in New York and Chicago's Art Institute.



Puzzle è focalizzata sulla possibilità di creare autonomamente layout e pattern. L'individualità e la personalizzazione dello spazio divengono sempre più importanti, e la collezione permette all'utente configurazioni senza limiti. È quasi impossibile ottenere due superfici identiche.

The Puzzle collection hinge on the possibility to organize layouts and patterns yourself. The individuality and the ability to be able to personalize your own space is increasingly important, and it allows the user unlimited configurations. It will be almost impossible to have two surfaces that look the same.

Edward Barber & Jay Osgerby



CREDITS

Art direction: Alla Carta Studio
Graphic design: Matteo Pastorio
Text: Mutina
Photography: Gerhardt Kellermann
Backstage images: Matteo Pastorio (p.44),
Pascal Grob (p.45).
Set design: Alla Carta Studio
Illustration: Damien Florébert Cuypers
Printed and bound in Italy. June 2018.

Thanks to:

Arper
Aésop
Artemide
Axor
Bloc Studios
Danese Milano
Danord
Glas Italia
Isokon Plus
Knoll
Laufen
Magis
Ozeki Co.Ltd
Royal Doulton
Society Limonta
USM U.Schärer Söhne AG
Vitra

All the rights are reserved.
Not any part of this work can be reproduced
in any way without the preventive written
authorization by Mutina. All work is
copyrighted © to their respective owners.

To discover more about Mutina
collections visit mutina.it

Ceramiche Mutina Spa
Via Ghiarola Nuova 16
41042 Fiorano MO, Italia
T +39 0536812800
F +39 0536812808
info@mutina.it
www.mutina.it

© Mutina 2018

